

How to Install DISCatcher® Pros

Tools you will need for this project:

- Posthole digger or auger with 8" bit
- Posthole shovel - AKA a Sharp Shooter
- 2 adjustable wrenches
- Magnetic level or long carpenter's level
- Water jug
- Duct tape
- Approximately 1 bag of concrete per hole
- A Discatcher pipe with locking tab
- A Sprinkler valve box for each hole



Once you have dug the holes

The sleeve should fit 1/2 - 1" below level.

Tape the sleeve bottom

First things first, start by taping the bottom of the sleeve thoroughly with duct tape. This prevents any concrete from seeping into the sleeve, which needs to be clear of any obstructions all the way to the bottom of the sleeve. If you want to be extra safe, wrap another piece around the tape you covered the bottom with. No leaking here!



Position the sleeve in the hole

Since this sleeve will be protected by the sprinkler valve cover, we will need the sleeve about 1" below grade. Set the sleeve down in the hole, align the locking tab so that it faces the tee pad, and make sure to slightly offset the sleeve in the hole so that the locking tab is centered in the hole. This allows the lock to be easily accessed when in the sprinkler valve box.

Back to Tee

Offset



Slide the DISCatcher pole onto the sleeve

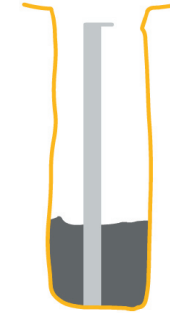
Make sure the locking tab is attached. The pole will prevent any concrete from getting into the sleeve, and make it very easy to align the sleeve to sit straight.



How to Install DISCatcher® Pros

Pour in some concrete

Pour in concrete to fill about 1/3 of the depth. We mix the concrete in the hole. It's easier, quicker, and it saves time and energy.



Pour in water to make the concrete

Make sure you do not pour too much, if it is really soupy, add a little more concrete.



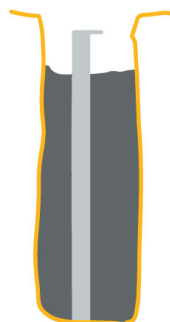
Mix the concrete with the spade

Stick the spade in and twist and turn it while lifting. This will mix the water with the concrete. Continue until the water is no longer floating on top and no more dry patches of concrete appear.



Repeat until 5-6" from top

Continue adding concrete, water and mixing until close to the top. Allow room for an opened lock to easily hang from the locking tab. Too much and the lock won't fit. Too little and the sprinkler valve box won't be set in the concrete.



How to Install DISCatcher® Pros

Add just enough water...

Make sure your upper concrete is of a nice consistency.



Mix that concrete thoroughly

Smoother the better. Makes it easy to slide the sprinkler valve box into the concrete.



Drop the valve box in and seat it

Slide the valve box down over the pole and press it into the concrete. Make sure it is offset giving the locking tab room to get the lock in. Also, make sure it sits high enough so that the sleeve will be covered completely when the valve box cover is attached. The goal is to create a flush mounted cover so that lawn mowers and other equipment do not damage your sleeve, and the sleeve doesn't damage equipment, toes, dogs, etc. This also protects the lock.



Straighten the pole front to back

Stick a level against the pole, and move the pole until it is level.



How to Install DISCatcher® Pros

Now straighten it side to side

Now move to the other axis (90°) to make sure it is square in that direction also.

A level target is fair from all directions.

It might require a little muscle and some rechecking of the other axis before all is square.



Remove the pole... carefully

Once it is square, remove the alignment pole and wipe any excess concrete from the locking tab. do not fill in the area around the sprinkler valve box, it will need air to dry quickly.



Place the cover on the valve box

Once you place the cover on the valve box (make sure it clears the sleeve) you are done! Now just think, only 17 more to go...



The Disc Golf Experts™